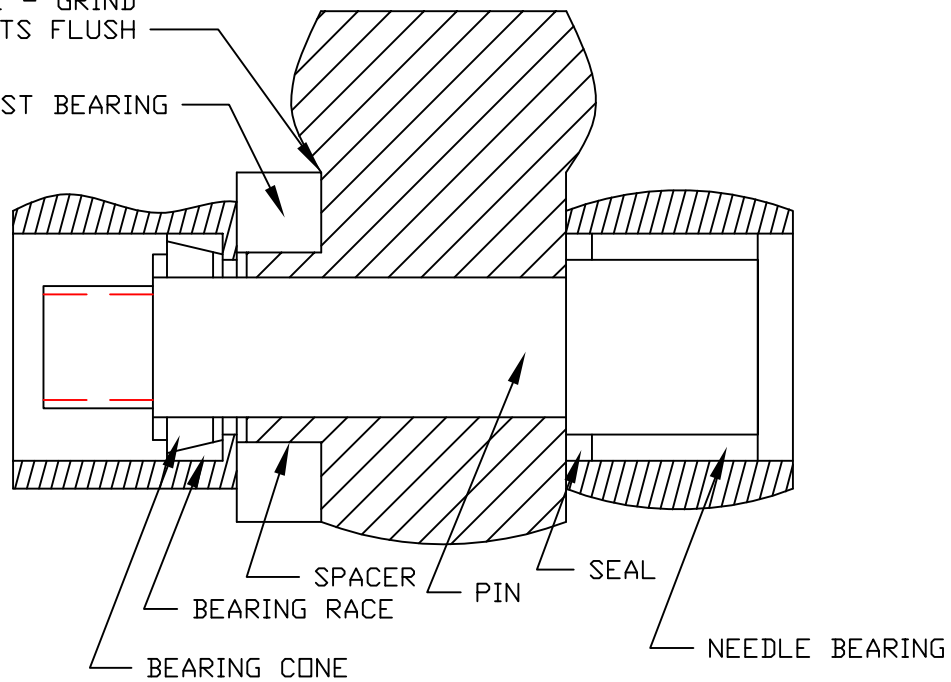


INSTRUCTIONS FOR 18490 LOWER OUTER

POSSIBLE INTERFERENCE - GRIND
SO BEARING FITS FLUSH

THRUST BEARING



1. REMOVE UNIT FROM CAR AND DISASSEMBLE - LAY PARTS OUT IN THE ORDER DISASSEMBLED
2. CLEAN COMPLETELY AND REMOVE BEARING RACES FOR BOTH THE CONE DESIGN AND THE NEEDLE BEARING DESIGN
3. CHECK THRUST BEARING SITS FLUSH ON SPINDLE SUPPORT - LIGHTLY GRIND RELIEF AS NEW BEARING IS A LARGER DIAMETER.
4. LOCK TIGHT SLEEVE OVER SPINDLE SUPPORT EXTRUSION - THIS WILL CENTER THE THRUST BEARING
5. INSTALL BEARING RACE, NEEDLE BEARING AND SEAL AS SHOWN ABOVE
6. SLIDE THRUST BEARING AND SPINDLE SUPPORT INTO LOWER ARM - CHECK FOR HORIZONTAL CLEARANCE - SHIM TO ZERO CLEARANCE
7. REMOVE SPINDLE SUPPORT AND GREASE ALL PARTS
8. REINSTALL SPINDLE SUPPORT WITH BEARING AND SHIMS. INSTALL KEY INTO PIN AND INSERT PIN WITH KEY ALIGNED INTO SPINDLE SUPPORT
9. ADD BEARING CONE AND ADJUST NUT AS ADJUSTING A WHEEL BEARING TIGHT DOUBLE NUT TO LOCK IN PLACE
10. INSTALL CAPS AND GREASE AGAIN